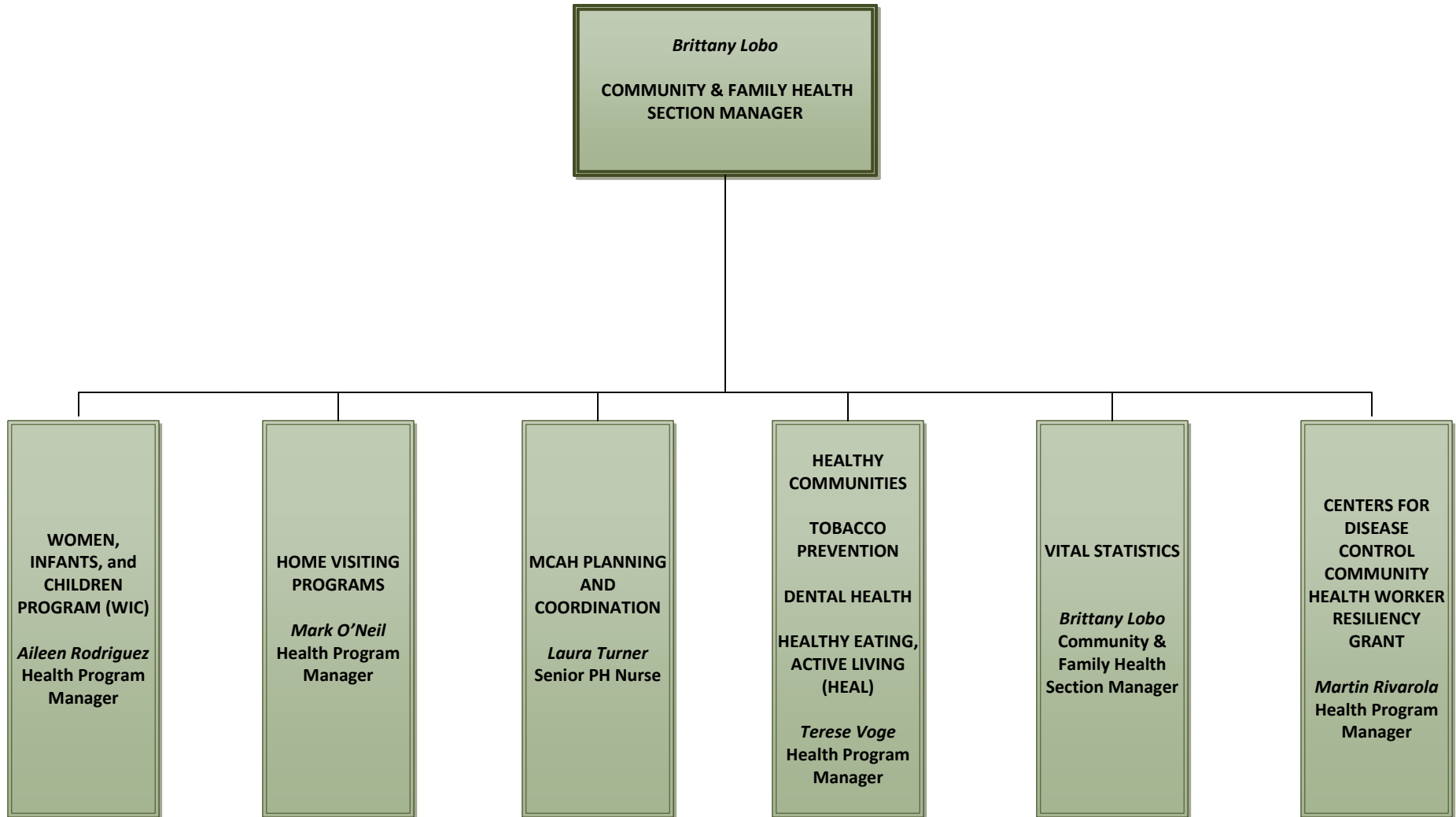




**COMMUNITY
& FAMILY HEALTH**

Director: Tina Rivera
Issue Date: February 1, 2024
(Organizational Chart)



Community & Family Health

- Brittany Lobo, Community & Family Health Section Manager
 - Women, Infants, and Children Program (WIC): Aileen Rodriguez, Health Program Manager
 - Home Visiting Programs: Mark O'Neil, Health Program Manager
 - MCAH Planning and Coordination: Laura Turner, Senior PH Nurse
 - Healthy Communities; Tobacco Prevention; Dental Health; Healthy Eating, Active Living (HEAL); Terese Voge, Health Program Manager
 - Vital Statistics: Brittany Lobo, Community & Family Health Section Manager
 - Centers for Disease Control Community Health Worker Resiliency Grant; Martin Rivarola, Health Program Manager