

COUNTY OF SONOMA - JOB DEMANDS ANALYSIS

JOB CLASSIFICATION: Building Mechanic I/II
DEPARTMENT: General Services
DOT OCCUPATION CODE: 862.381-030; 842.361-030; 824.261-010; 637.261-014;
840.381-010

DATE COMPLETED: 2018
DIVISION: Facilities Development & Management
PHYSICAL DEMAND STRENGTH RATING: Very Heavy, per Job Analysis

INSTRUCTIONS TO MEDICAL PROVIDERS COMPLETING THIS FORM:

Please use the "Medical Provider Use Only" columns to the right of each section and the "Medical Provider's Comments & Signature" Section on the signature page to provide work restrictions by indicating whether there is some portion of each function that the employee can perform; designating whether each restriction is temporary or permanent; and, if restriction is temporary, stipulating the expected duration of work restriction(s). To finalize the form, please provide the name of the employee evaluated and additional comments, as appropriate, then sign and date where indicated.

FREQUENCY RATING:

Frequency	Percentage of time per shift	Repetition (# times per shift)	8 Hr Shift	9 Hr Shift	10 Hr Shift	12 Hr Shift
Never (N)	n/a	n/a	n/a	n/a	n/a	n/a
Occasionally (O)	1 - 33%	1 – 100	0 - 2.5	0 - 3	0 - 3.5	0 – 4
Frequently (F)	34 - 66%	100 – 500	2.5 - 5.5	3 - 6	3.5 - 7	4 – 8
Continuously (C)	67 - 100%	500+	5.5 – 8	6 - 9	7 - 10	8 - 12

PART 1 - JOB DUTIES/FUNCTIONS:

A. Job Duty/Function	B. Job Duty #	C. Freq Rating	D. Equipment or tools used to perform (Describe)	E. Specialized Expertise, License, Certification Required? (Describe)	F. Reason position exists? (Y/N)	G. Essential or Non-Essential	Medical Provider Use Only: For each job duty/function, indicate in this column "Can Perform", is "Temporarily Restricted" from performing, or is "Permanently Restricted" from performing.
Works outdoors in all types of weather conditions, performing duties in both daylight and dark/dim conditions; works in detention facilities under stressful conditions, subject to personal danger, verbal abuse, offensive smells, and exposure to loud noises, heights, hazardous materials, including blood borne pathogens and aerosol transmissible diseases. Follows applicable state and local codes and regulations, county policies and procedures							
Works long and irregular hours, including nights, weekends, and holidays, during response and recovery phases of emergency situations (earthquakes, fires, heavy rains/flooding, emergency repairs, etc.).	1	O			Y	E	

A. Job Duty/Function	B. Job Duty #	C. Freq Rating	D. Equipment or tools used to perform (Describe)	E. Specialized Expertise, License, Certification Required? (Describe)	F. Reason position exists? (Y/N)	G. Essential or Non-Essential	Medical Provider Use Only: For each job duty/function, indicate in this column "Can Perform", is "Temporarily Restricted" from performing, or is "Permanently Restricted" from performing.
Installs and maintains a variety of appliances, fixtures, and equipment; works with motors and engines connected to equipment; troubleshoots equipment to ensure proper startup; reaches, stoops, bends; walks and stands for extended periods of time.	2	F	Computer, hand tools – power and manual, Personal Protective Equipment (PPE)		Y	Y	
Installs and maintains HVAC equipment, ducting, and finish registers; balances system according to specifications; lifts and carries materials weighing 100+ pounds on level ground and up heights; stretches, reaches, stoops, bends; walks and stands for extended periods of time. Exposure to heights, solvents, refrigerants.	3	F	Computer, hand tools – power and manual, ladder, aerial lifts, PPE	Refrigeration Technician Certificate	Y	Y	
Installs and maintains electrical equipment, devices, switches, and wires to professional standards; push/pull, reaches, stoops, bends; walks and stands for extended periods of time. Potential exposure to live current.	4	F	Hand tools – power and manual, ladder, aerial lift, PPE		Y	Y	
Performs semi-skilled and preventative maintenance work: unplugs drains and toilets; hangs pictures and other items on walls; checks fire extinguishers and recharges as necessary; replaces lightbulbs; reaches, stoops, bends; walks and stands for extended periods of time.	5	F	Hand tools – power and manual, ladder, aerial lift, PPE		Y	Y	
Reads and interprets blue prints, plans, and other technical source documents; ensures work is done according to plans and to code.	6	O	Computer, publications		Y	Y	
Communicates in person, by phone, by email and via two-way radio, with co-workers, supervisors, vendors, and customers; responds to requests for services; explains work progress; receives and gives instruction; maintains a calm and professional demeanor.	7	C	Computer, phone, two-way radio		N	Y	
Drives/operates pickup truck or van to and from job sites; ensures that tools and materials are available in vehicle; inspects vehicle and reports any damage, safety, and maintenance issues.	8	C	Pickup truck, van	CA Driver's License	N	Y	

A. Job Duty/Function	B. Job Duty #	C. Freq Rating	D. Equipment or tools used to perform (Describe)	E. Specialized Expertise, License, Certification Required? (Describe)	F. Reason position exists? (Y/N)	G. Essential or Non-Essential	Medical Provider Use Only: For each job duty/function, indicate in this column "Can Perform", is "Temporarily Restricted" from performing, or is "Permanently Restricted" from performing.
Following applicable state and local codes and regulations, performs skilled construction and carpentry work: repairs roofs; performs casework fabrication and setting of cabinets, countertops; cuts and installs trim; performs layout and construction of non-bearing walls with wood and steel studs; installs sheetrock; tapes and finishes walls with texture or smooth coat; installs new and cut-in doors and windows; lifts, carries, and places materials and equipment weighing up to 77 pounds; works above ground at heights up to 60 feet; bends, stoops, reaches.	9	O	Hand tools - power and manual, shovel, post hole digger; ladder, Sawzall, pneumatic tools, forklift, heavy equipment	Forklift Certification; Aerial Lift Certification	Y	Y	
Performs professional plumbing work: roughs in copper, iron, and DWV piping in commercial and residential environments; installs back flow devices; sets finished plumbing fixtures; installs plumbing finishes; reaches, stoops, bends; walks and stands for extended periods of time.	10	O	Hand tools – power and manual, ladder, PPE		Y	Y	
Perform interior improvements: paints walls, installs carpet and floor and ceiling tiles; installs locksets, security systems, door closers, and other door hardware; reaches, stoops, bends; walks and stands for extended periods of time.	11	O	Hand tools – power and manual, paint brush, ladder, aerial lift, PPE		Y	Y	
While working in the detention center, manages the security of all tools; maintains control; ensures that all tools are safely stowed and removed from the premises at the completion of the job. Communication with Correctional Staff.	12	O	Tool Cart, Hand tools – power and manual, paint brush, ladder, aerial lifts, PPE				
Continuously observes safety practices and procedures; actively utilizes and implements established safety practices; ensures subordinates follow all safety and work practices; wears appropriate safety gear; operates hand and power tools in accordance with safety standards.	13	F	PPE (Personal Protective Equipment), hand tools – power and manual	Certificate of Hazardous Materials Training	N	Y	
Prepares construction sites for concrete work by excavating, compacting, forming, and installing reinforcement; pours concrete; performs finishing work; stands for extended periods; stoops, kneels, bends, reaches.	14	O	Hand tools - power and manual, heavy equipment, jackhammer		N	N	
Participates in continuous training to maintain and enhance knowledge and skills necessary for assigned duties.	15	O			N	Y	

A. Job Duty/Function	B. Job Duty #	C. Freq Rating	D. Equipment or tools used to perform (Describe)	E. Specialized Expertise, License, Certification Required? (Describe)	F. Reason position exists? (Y/N)	G. Essential or Non-Essential	Medical Provider Use Only: For each job duty/function, indicate in this column "Can Perform", is "Temporarily Restricted" from performing, or is "Permanently Restricted" from performing.
LEVEL II -Organizes and performs job duties independently and with good judgment, subject to only periodic check-ins; considers multiple solutions for completing the job; makes recommendation on best solution; provides technical guidance and advice to co-workers; ensures work is properly completed; completes all required paperwork.	16	F	Computer		N	Y	
LEVEL II - Performs layout and installation of electrical service panels. (assigned to experienced electricians only)	17	O	Computer, hand manual tools – power and	CA Electrician Certification	Y	Y	

PART 2: PHYSICAL DEMANDS

Activity	Examples of Duties/Functions Requiring Activity	FREQUENCY RATING Never, Occasional; Frequent, or Constant	MEDICAL Can Perform	PROVIDER Temporarily Restricted	USE ONLY: Permanently Restricted
Sitting (i.e., using computer, phone, two-way radio; driving; operating heavy equipment)	5,6,7,8,15	O			
Walking (i.e., installing appliances, fixtures, equipment; performing semi-skilled and preventative maintenance work; inspecting vehicles)	1,2,3,4,6,7,8,9, 10,11,12,13	C			
Running	N/A	N			
Standing (i.e. installing appliances, fixtures, equipment; performing semi-skilled and preventative maintenance work; inspecting vehicles; preparing construction sites for concrete work; performing skilled construction, carpentry work, repair roofs)	1,2,3,4,5,6,7,8,9, 10,11,12,13,14, 15	C			
Bending-Neck (i.e., using computer, phone, two-way radio; driving; operating heavy equipment; reading blue prints, plans; installing appliances, fixtures, equipment; performing semi-skilled and preventative maintenance; inspecting vehicles; preparing construction sites for concrete work; performing skilled construction, carpentry work, repair roofs)	1,2,3,4,5,6,7,8,9, 10,11,12,13,14, 15	C			
Bending-Waist (i.e., installing appliances, fixtures, equipment; performing semi-skilled and preventative maintenance; inspecting vehicles; preparing construction sites for concrete work; performing skilled construction, carpentry work, repair roofs)	1,2,3,4,9,11,12, 13,15	F			
Squatting (i.e., installing appliances, fixtures, equipment; performing semi-skilled and preventative maintenance; inspecting vehicles; preparing construction sites for concrete work; performing skilled construction, carpentry work, repair roofs)	1,2,3,4,9,11,12, 13,15	O			
Climbing (i.e., installing appliance, fixtures, equipment; performing semi-skilled and preventative maintenance; performing skilled construction, carpentry work, repair roofs)	1,2,3,9,11,12,15	O			
Kneeling (i.e., installing appliances, fixtures, equipment; performing semi-skilled and preventative maintenance; inspecting vehicles; preparing construction sites for concrete work; performing professional plumbing work; performing skilled construction, carpentry work, repair roofs)	1,2,3,4,9,11,12, 13,15	F			
Crawling (i.e., installing appliances, fixtures, equipment; performing semi-skilled and preventative maintenance; preparing construction sites for concrete work; performing professional plumbing work; performing skilled construction, carpentry work, repair roofs)	1,2,3,4,9,11,12, 13,15	O			
Twisting-Neck (i.e., using computer; reading blue prints; driving; operating heavy equipment; managing security of self and tools while working in detention facilities; observing safety practices and procedures)	1,2,3,4,5,6,7,8,9, 10,11,12,13,14, 15,16	F			
Twisting-Waist (i.e., installing a variety of appliances, fixtures, equipment; performing professional plumbing work; performing interior improvements; performing concrete work)	1,2,9,11,12,13, 15	O			
Repetitive Hand Use	1,2,3,4,5,6,7,8,9, 10,11,12,13,14,	F			

Activity	Examples of Duties/Functions Requiring Activity	FREQUENCY RATING Never, Occasional; Frequent, or Constant	MEDICAL Can Perform	PROVIDER Temporarily Restricted	USE ONLY: Permanently Restricted
	15,16				
Simple Grasping-Right Hand (i.e., holding hand tools, two-way radio, paint brush, blue prints)	1,2,3,4,5,6,7,9,10,11,12,14,15	C			
Simple Grasping-Left Hand (i.e., holding hand tools, two-way radio, paint brush, blue prints)	1,2,3,4,5,6,7,9,10,11,12,14,15	C			
Power Grasping-Right Hand (i.e., installing appliances, fixtures, equipment; using plumbing snake; using power tools; performing concrete work)	1,2,3,4,9,11,12,14,15	F			
Power Grasping-Left Hand (i.e., installing appliances, fixtures, equipment; using plumbing snake; using power tools; performing concrete work)	1,2,3,4,9,11,12,14,15	F			
Fine Manipulation-Right Hand (i.e., electrical work, wiring; using small nails, screws, washers, nuts, bolts; detailed painting; using keys; repairing locks)	1,2,3,10,11,12	F			
Fine Manipulation-Left Hand (i.e., electrical work, wiring; using small nails, screws, washers, nuts, bolts; detailed painting; using keys; repairing locks)	1,2,3,10,11,12	F			
Pushing and Pulling-Right Hand (i.e., installing appliances, fixtures, equipment; using hand truck, carts; moving equipment with wheels; loading/unloading ladders)	1,2,3,4,8,9,10,11,12,13,15	F			
Pushing and Pulling-Left hand (i.e., installing appliances, fixtures, equipment; using hand truck, carts; moving equipment with wheels; loading/unloading ladders)	1,2,3,4,8,9,10,11,12,13,15	F			
Reaching-Above shoulder level (i.e., installing appliances, fixtures, equipment; loading/unloading ladders; hanging pictures; painting; installing ceiling tiles; maintaining and repairing motor and engines, electrical equipment/devices, HVAC, Plumbing; installing doors and windows; repairing roofs; replacing light bulbs)	1,2,3,4,8,9,10,11,12	F			
Reaching-Below shoulder level (i.e., installing appliances, fixtures, equipment; maintaining and repairing electrical equipment/devices, HVAC, Plumbing; using computer, phone; loading/unlading supplies; repairing roofs; installing trim; installing plumbing finishes, carpet, locksets, security systems, door closers, door hardware; pouring concrete, performs finishing work)	1,2,3,4,7,8,9,10,11,12,13,15	F			
Lifting-up to 10 lbs. (i.e., small tools; drill; Sawzall; two-way radio; blue prints; small fire extinguisher; light bulbs)	1,2,3,4,5,6,7,9,10,11,12,13,14,15	C			
Lifting-11-25 lbs. (i.e., step stools, ladders 5 feet and under; box of air filters; tool bag; medium fire extinguisher; locksets)	1,2,3,4,5,9,10,11,12,15	F			
Lifting-26-50 lbs. (i.e., ladders from 6 feet to 20 feet; refrigerant; large fire extinguisher; portable band saw; pipe freezer; bag of salt)	1,2,3,4,9,10,11,15	O			
Lifting 51-75 lbs. (i.e., 5 gallon buckets of paint, oxidizer; sheet of plywood; tank of compressed air; portable generator; spools of wire; portable air compressor; bag of cement)	1,2,3,9,10,11,12,15	O			

Activity	Examples of Duties/Functions Requiring Activity	FREQUENCY RATING Never, Occasional; Frequent, or Constant	MEDICAL Can Perform	PROVIDER Temporarily Restricted	USE ONLY: Permanently Restricted
Lifting 76-100 lbs. (i.e., sheet of drywall; small plumbing snake; bag of cement)	1,2,9,11,15	O			
Lifting 100 + lbs. (i.e., large plumbing snake; water heater; engines, motors for pumps)	1,2,11	O			
Carrying 0-10 lbs. (i.e., small tools; drill; Sawzall; two-way radio; blue prints; small fire extinguisher; light bulbs)	1,2,3,4,5,6,7,9, 10,11,12,13,14, 15	C			
Carrying 11-25 lbs. (i.e., step stools, ladders 5 feet and under; box of air filters; tool bag; medium fire extinguisher; locksets)	1,2,3,4,5,9,10,11, 12,15	F			
Carrying 26-50 lbs. (i.e., ladders from 6 feet to 20 feet; refrigerant; large fire extinguisher; portable band saw; pipe freezer; bag of salt)	1,2,3,4,9,10,11,15	O			
Carrying 51-75 lbs. (i.e., 5 gallon buckets of paint, oxidizer; sheet of plywood; tank of compressed air; portable generator; spools of wire; portable air compressor; bag of cement)	1,2,3,9,10,11,12, 15	O			
Carrying 76-100 lbs.	9	O			

PART 3: SENSORY REQUIREMENTS

Activity	Examples of Duties/Functions Requiring Activity	FREQUENCY RATING Never, Occasional; Frequent, or Constant	MEDICAL Can Perform	PROVIDER Temporarily Restricted	USE ONLY Permanently Restricted
Functional vision, normal or corrected (i.e., using computer, phone, two-way radio; driving; operating heavy equipment, forklift, aerial lift; installing, maintaining, repairing appliances, fixtures, equipment; managing security of self and tools while working in detention facilities; observing safety practices and procedures; performing skilled construction, plumbing, electrical and concrete work)	1,2,3,4,5,6,7,8,9, 10,11,12,13,14, 15,16	C			
Functional color vision, normal or corrected (i.e., performing electrical work with colored wiring; reading blue prints, plans, technical documents; laying out and installing electrical service panels; lighting; ensuring paint is the correct color; identifying alarms lights)	3,5,10,12,14	O			
Functional night vision, normal or corrected (i.e., performing work duties before and after daylight hours; working in dim/poorly lit spaces)	1,2,3,8	O			
Functional hearing, normal or corrected (i.e., communicating with co-workers, supervisors, vendors, customers; managing security of self and tools while working in detention facilities; identifying alarms and hazards)	6,7,13,14	C			
A sense of smell or taste (i.e., ensuring proper function of appliances, fixtures, equipment; ensuring proper function of duty vehicle; identifying plumbing/sewage leak; identifying hazards)	1,2,3,4,8,10,11, 13,14	C			

PART 4: COMPREHENSION LEVEL

Activity	FREQUENCY RATING Never, Occasional; Frequent, or Constant	MEDICAL Can Perform	PROVIDER Temporarily Restricted	USE ONLY Permanently Restricted
Follow Oral Instructions	F			
Follow Written Instructions	F			
Required to sustain concentration	F			

PART 5: NATURE OF TASKS

Activity	FREQUENCY RATING Never, Occasional; Frequent, or Constant	MEDICAL Can Perform	PROVIDER Temporarily Restricted	USE ONLY Permanently Restricted
Follow set procedures	C			
Organize own work	F			
Able to ask questions or request assistance when needed	C			
Required to make decisions independently	F			
Required to train and/or lead others (i.e., cross-training co-workers to sites, buildings, techniques)	O			
Required to direct others (e.g. planning, goal setting, performance)	N			

PART 6: WORK PACE

Activity	FREQUENCY RATING Never, Occasional; Frequent, or Constant	MEDICAL Can Perform	PROVIDER Temporarily Restricted	USE ONLY Permanently Restricted
Tightly scheduled and rapid pace of work activities at high volume	O			
Meet time sensitive deadlines	O			
Long and/or irregular hours	O			
Limited/unpredictable opportunity for breaks	F			
Required to perform on-call or emergency work (i.e., voluntary rotating call schedule; during response and recovery phase of emergency or natural disaster)	O			

PART 7: COMPLEXITY/VARIABILITY

Activity	FREQUENCY RATING Never, Occasional; Frequent, or Constant	MEDICAL Can Perform	PROVIDER Temporarily Restricted	USE ONLY Permanently Restricted
Variable and unpredictable workflow	F			
Attention divided by issues requiring multi-tasking	F			
Work requires precise attention to detail	O			
Use of judgment in routine matters	C			
Requires use of judgment in adapting procedures from one task to another	O			
Possible legal ramifications associated with work activities or work product	C			

PART 8: INTERACTIONS WITH OTHERS

Activity	FREQUENCY RATING Never, Occasional; Frequent, or Constant	MEDICAL Can Perform	PROVIDER Temporarily Restricted	USE ONLY Permanently Restricted
Works with others (e.g., co-workers, other departments/agencies, public)	F			
Interactions limited to giving/receiving information	F			
Interactions exceed giving/receiving information (e.g., advises, persuades, justifies)	F			
Interactions occur under circumstances of emotional stress	O			
Risk of confrontation with violent or assaultive clients or customers	O			

PART 9: ENVIRONMENTAL FACTORS/WORKING CONDITIONS

Activity	FREQUENCY RATING Never, Occasional; Frequent, or Constant	MEDICAL Can Perform	PROVIDER Temporarily Restricted	USE ONLY Permanently Restricted
Work Inside	F			
Work Outside	F			
Extreme Heat (above 100 degrees) (i.e., seasonal weather exposure)	O			
Extreme Cold (below 32 degrees) (i.e., maintenance and repair of walk-in freezers)	O			
Excessive Noise (must raise voice to be heard)	O			
Vibration (e.g., jack hammer, hammer drill, chainsaw, etc.)	F			
Dust, Vapors, Fumes, Smoke	O			
Silica, asbestos, etc. (with PPE and proper ventilation)	O			
Solvents (e.g., gas, turpentine, etc.)	O			
Grease, oils	O			
Acidic, Caustic Solutions	O			
Pesticides (i.e., escorting exterminator during spraying)	O			
Explosives (e.g., dynamite, bomb, etc.)	N			
Cleaning supplies, abrasives	F			
Other Chemicals (e.g. drugs and other contraband) (i.e., working at parks)	O			
Human Blood, Body Tissues, or Fluids (i.e., unplugging drains and toilets)	O			
Human Wastes (i.e., unplugging drains and toilets)	O			
Animal Blood, Body Tissues, or Fluids (i.e. working at parks)	O			
Animal Wastes (i.e. working at parks)	O			
Biological Toxins (e.g., poison ivy, poison oak, anthrax, etc.)	O			
Insect Bites (e.g., ticks, mosquitos, spiders, etc.)	O			
Biomedical Waste	O			
Ionizing Radiation	N			
Non-Ionizing Radiation	N			
Electrical Energy	O			
Walking on uneven, slippery, or rough terrain (e.g., gravel, rocks, hills, etc.)	F			
Proximity to moving mechanical parts (e.g., equipment, machinery)	F			
Proximity to moving vehicles or objects	F			
Heights (e.g., rooftop, ladders, scaffolding, etc.) (i.e., extension ladders up to 28 feet, various aerial, man lifts; rooftops)	O			
Contact with water, other liquids, humid conditions - not weather related	O			
Work Below Ground: (e.g., excavation, trench, etc.) (i.e., pipe/plumbing repairs)	O			
Potential exposure to airborne infectious diseases (e.g. clinics, labs, corrections) (i.e., working in detention facilities, health clinic)	O			
Operates non-commercial motor vehicles (cars, trucks)	F			
Operates commercial vehicles – CDL Class <u>N/A</u> Endorsements <u>N/A</u>	N			
Operates passenger van to transport clients, inmates, etc.	N			
Pulls non-commercial trailers or equipment (i.e., to haul debris or equipment)	O			
Operates heavy equipment	N			
Other: Fork Lift; Aerial Lifts- Certification Required	O			

PART 10: MEDICAL SCREENING, SURVEILLANCE AND VACCINATION REQUIREMENTS

Please check each of the medical screening, surveillance, and vaccination requirements that apply to the position, and indicate if the requirement applies pre-employment/pre-placement only, or whether there are additional requirements after hire.

Medical Screening, Surveillance or Vaccination	Pre-Hire	Post-Hire	Frequency (one time, annual, etc.)
Audiometric Testing	X		
DOT Drug and Alcohol Screening			
DOT Physical Exam			
Respirator Physical Exam	X	X	Annually
Respirator Questionnaire – Short			
Respirator Questionnaire – Standard	X	X	Annually
Blood lead level			As Needed
Hazardous Waste/Emergency Worker physical			
Heavy metal screen (mercury, lead, arsenic)			
HINT Hearing Noise Sensitivity Testing			
Tuberculosis skin test	X	X	Annually
Vaccine: MMR			
Vaccine: Hepatitis B	X	X	As Needed
Vaccine: Influenza	X	X	Annually
Vaccine: Meningococcal			
Vaccine: Pneumococcal			
Vaccine: Rabies			
Vaccine: Tdap			
Vaccine: Chickenpox			



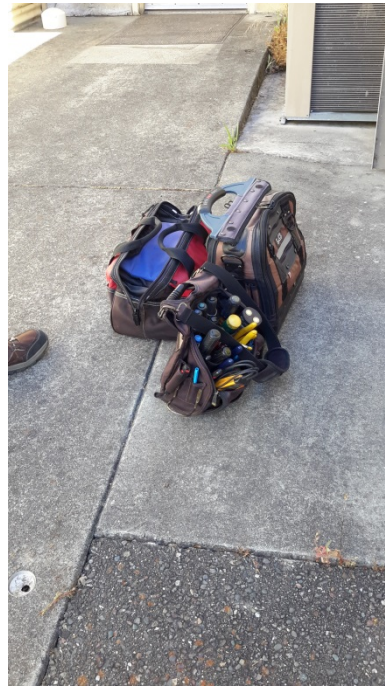
Example of Duty Truck- Storage from 22" to Roof Rack at 84" 8' Ladder – 30 lbs.



Duty Truck- Truck Bed at 36" high



Duty Van- Ladder Rack 84" 5' Ladder in van - 20 lbs. 20' Extension Ladder - 45 lbs.



Tool Bags- Weighted from 15 to 25 lbs.; carried separately or all at once



Roof Access- Pulley System for tools, materials and equipment- Awkward posture to bring tools to Roof, bent at waist with arms extended away from body.



Roof Access- Use Pulley to bring Tools, materials and equipment To roof



Fire Extinguishers- 10 lbs. to 30 lbs.



Jackhammer and accessories- 115 lbs.



Portable Generators- 75 lbs. each



**Large Snake- 200 lbs.-
2 person lift or Mechanical Lift Assist to load/unload**



**Various Tools- stored at 40"
Pipe Freezer- 45 lbs.
Porta-Band- 34 lbs.**



Various Tools and Materials



Pipe stored up to 84"- 2 person lift to move



Storage of Small parts-
Items stored from 4" to 84"



Storage of Small part and wire-
Items stored from 4" to 84"



Storage of Signs and Small parts-
Items stored from 4" to 84"



Hand Trucks



Spools of wire- up to 65 lbs.



Storage for Plumbing projects



Sample of Motor- 110 lbs.



Storage- Various chemicals and supply



Compressed Air Tank- 52 lbs.



Roof- multiple ladders and half walls to traverse to access Equipment for maintenance or repair



Roof with multiple elevations- tools, materials equipment lifted over half walls and carried up ladders



HVAC Unit- one of many that require maintenance and Repair



VFD Distributor- Lock Out/Tag Out required for maintenance and repair



“Swamp Cooler”



Camera on Roof- serviced by Building Mechanics



**Air Filters- 12 each box at 15 lbs.
Quarterly filter change can use
45 to 50 boxes (up to 600 filters)**



**HEPA Filter on Negative Pressure
Rooms for Aerosolized Transmissible
Diseases- Additional PPE required
During maintenance and repair**



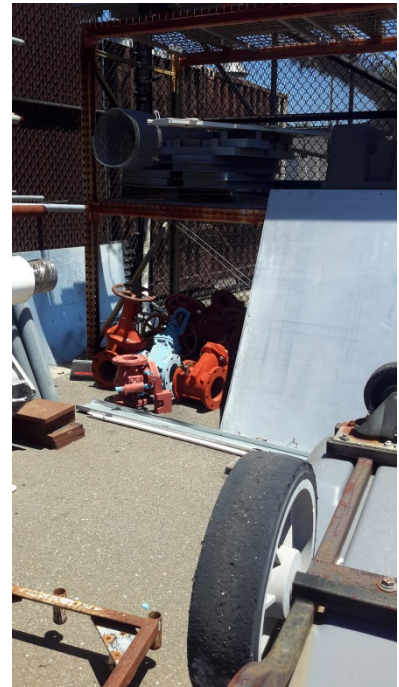
Man Lift



Man Lift and Bucket Lift



Bags of Salt- 50 lbs. from 6" to 36"



Valves- up to 150 lbs.



Stainless Steel Toilets- 15lbs. up to 48"



Full Sheet of 3/4" Plywood- 61 lbs. from 6" to 36"



Light Poles and Electrical Conduits



4 foot Parking Stop- 124 lbs. from 6" to 36"
2 person lift



5 gallon bucket of oxidizer- 55 lbs.



Refrigerant- 35 lbs.

PART 12 – FORM REVIEW AND SIGNATURES

OCCUPATIONAL HEALTH CONSULTANTS

Name: _____ Title: _____

Signature: _____ Date: _____

SUPERVISOR/SECTION MANAGER

Name: _____ Title: _____

Signature: _____ Date: _____

HUMAN RESOURCES RECRUITMENT AND CLASSIFICATION

Name: _____ Title: _____

Signature: _____ Date: _____

HUMAN RESOURCES SAFETY UNIT

Name: _____ Title: _____

Signature: _____ Date: _____

HUMAN RESOURCES DISABILITY MANAGEMENT

Name: _____ Title: _____

Signature: _____ Date: _____

PART 13 – MEDICAL PROVIDER REVIEW AND COMMENTS

Employee Name: _____ Date of Evaluation: _____

COMMENTS: _____

Provider Signature: _____ Date: _____