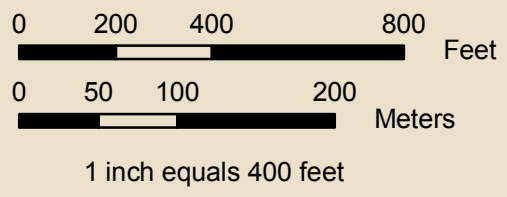


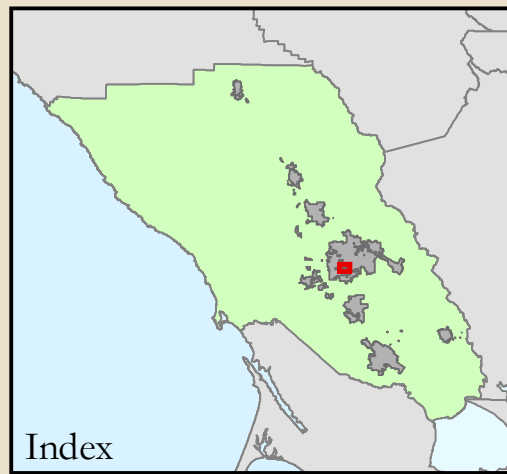
ROSELAND REDEVELOPMENT PROJECT AREA



MAP PRODUCED BY:
County of Sonoma Information Systems Department GIS Central
2615 PAULIN DRIVE, SANTA ROSA, CA 95403
(707)565-3819 GIS@sonoma-county.org
October 24, 2008



- Roseland Redevelopment Project Area
- Roseland Redevelopment Project Area (In City)
- Roseland Redevelopment Project Area (In County)
- GIS version of Assessor Parcels
- Santa Rosa Southwest Redevelopment Project Area
- City of Santa Rosa
- Freeway
- Major Road
- Residential Road
- Tracks
- Stream
- Intermittent Stream



Author:
County of Sonoma Community Development Commission

Projection & Coordinate System:
California State Plane Coordinate System, Zone II, NAD 83, US
survey feet, Lambert Conformal Conic.
Some data have been re-projected from other coordinate
systems and may not reflect
actual ground positions.

Document Source and Date:
\\sc-gisdb2\gisdata2\projects\Redevelopment\SantaRosa_Roseland\
SantaRosa_Roseland.mxd August 15, 2007

Source:
Sonoma County GIS Group, SBE

This map is provided as a visual display of County information. Reasonable effort
has been made to ensure the accuracy of the map and data provided; nevertheless,
some information may not be accurate. The positional accuracy of the data is
approximate and not intended to represent map accuracy from a published record of survey.

THE MAPS AND ASSOCIATED DATA ARE PROVIDED WITHOUT WARRANTY OF ANY KIND,
either expressed or implied, including but not limited to, the implied warranties of
merchantability and fitness for a particular purpose. Do not make a business decision
based on this data before validating your decision with the appropriate County agency
or other government entity.