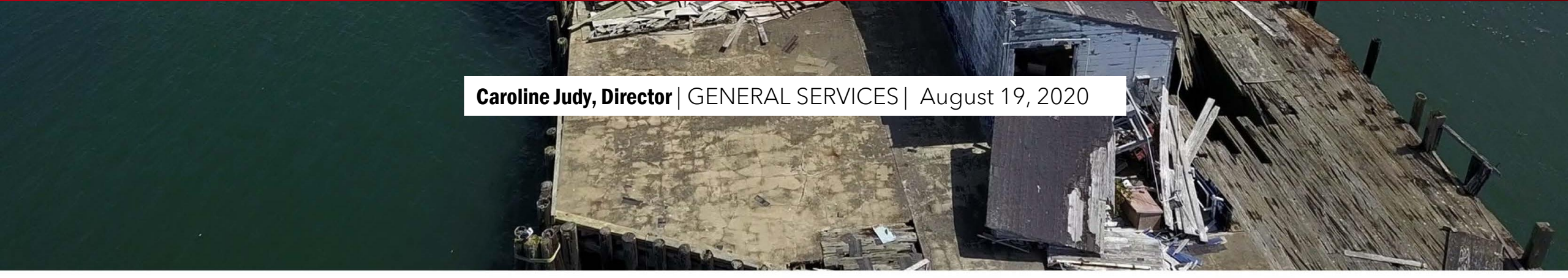




Meredith Pier – Demolition/Communication Plan



Caroline Judy, Director | GENERAL SERVICES | August 19, 2020

DEMOLITION PLAN

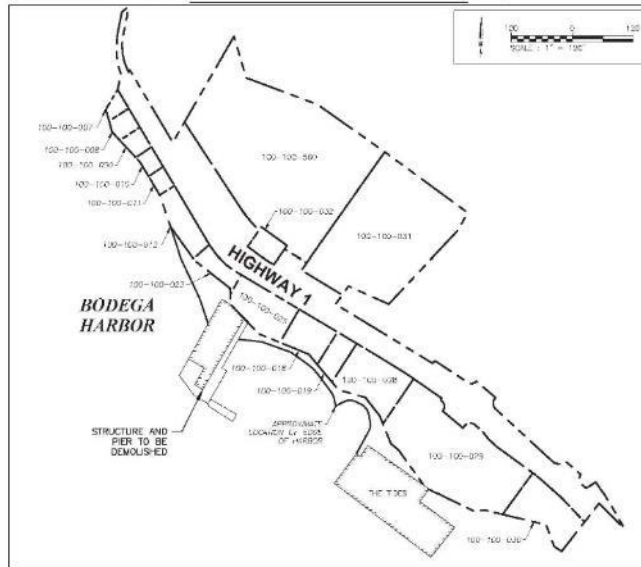
FOR
OLD MEREDITH PIER
 915 HIGHWAY 1
 BODEGA BAY, CALIFORNIA 94923



LOCATION MAP
NOT TO SCALE



VICINITY MAP



ABBREVIATIONS

AC: AREA TO BE DEMOLISHED
 FPF: FOUNDATION FOOT
 SF: SQUARE FOOT
 EQ: EARTHQUAKE
 TYP: TYPICAL

SHEET INDEX

- | | | |
|---|------|--------------------------------------|
| 1 | C1.0 | TITLE SHEET |
| 2 | C1.1 | CONSTRUCTION NOTES |
| 3 | C2.0 | EXISTING CONDITIONS: FLOOR PLAN |
| 4 | C2.1 | EXISTING CONDITIONS: FOUNDATION PLAN |
| 5 | C3.0 | DEMOLITION PLAN |

PROJECT PURPOSE STATEMENT

THE PROJECT WILL DEMOLISH A "DANGEROUS BUILDING" PRESENTING A PUBLIC SAFETY HAZARD. DEMOLITION WILL BE PHASED AND MAY INCLUDE DEMOLITION OF CONCRETE DECK, SUPPORTING FRAMING, AND PILING IN ADDITION TO STRUCTURE.

BASIS OF BEARING/DATUM

THE BASIS OF BEARINGS AND COORDINATES IS THE CALIFORNIA COORDINATE SYSTEM ZONE 2, NORTH AMERICAN DATUM (NAD83), EPOCH 2010.000. COORDINATES WERE DETERMINED FROM AN OPEN (ONLINE) POSITIONING USER SERVICE SOLUTION DATED FEBRUARY 05, 2020 UTILIZING BASE STATIONS DE7229 P194 FETALDMADCN2004 CORS ARE, DM7545 P191 BODGEBAYHEADCN2006 CORS ARE, & DM7545 P195 MRACHEMPLCN2006 CORS ARE. ALL DISTANCES ARE IN US SURVEY FEET. MULTIPLY ALL DISTANCES SHOWN BY 0.9999949 TO OBTAIN GROUND LEVEL DISTANCES. ELEVATIONS ARE NAVD83 (COMPUTED USING GZC01D18) - BENCHMARK SRT-MAO NAIL/SHINER #100 ELEVATION = 4.806M 15.77 feet.

OWNER INFO

FACILITIES DEVELOPMENT & MANAGEMENT DIVISION
 COUNTY OF SONOMA - DEPARTMENT OF GENERAL SERVICES
 2300 COUNTY CENTER DRIVE - SUITE A220
 SANTA ROSA, CALIFORNIA 95403

PROJECT MANAGER

MIKE VOLATILE - PROJECT SPECIALIST
 SONOMA COUNTY GENERAL SERVICES FDM
 CAPITAL PROJECTS GROUP
 (707) 565-1857

CIVIL ENGINEER INFO

EBA ENGINEERING
 823 SONOMA AVENUE
 SANTA ROSA, CA 95404
 (707) 544-0794

SURVEYOR INFO

EBA ENGINEERING
 823 SONOMA AVENUE
 SANTA ROSA, CA 95404
 (707) 544-0794

STRUCTURAL ENGINEER INFO

KENNETH R. HUGHES
 3620 MT. DIABLO BLVD, #202
 LAFAYETTE, CA 94549

APPROVED:

MIKE VOLATILE
 PROJECT SPECIALIST, CAPITAL PROJECTS GROUP
 SONOMA COUNTY GENERAL SERVICES
 FACILITIES DEVELOPMENT & MANAGEMENT

DATE

TITLE SHEET

OLD MEREDITH PIER DEMOLITION
 FACILITIES DEVELOPMENT & MANAGEMENT DIVISION
 COUNTY OF SONOMA - DEPARTMENT OF GENERAL SERVICES
 915 HIGHWAY 1, BODEGA BAY, CALIFORNIA 94923

Submitted / Revisions:

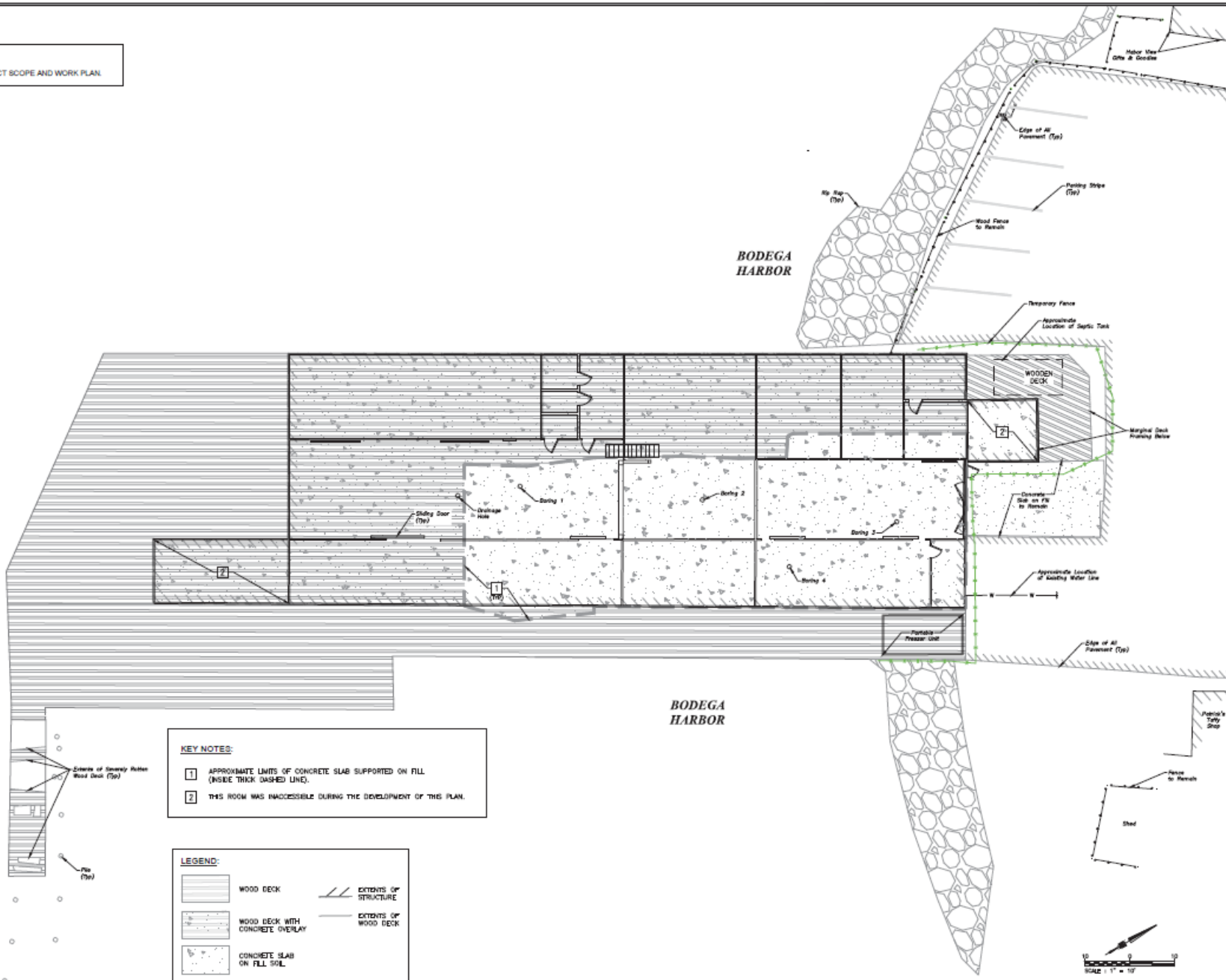
Job No: 20-2528
 Drawn By: DMW
 Checked By: ME
 Date: June 5, 2020

Sheet Number

C1.0

E:\Projects\2020\20-2528\20-2528.dwg, 2020-06-05 10:10:10 AM, 10/10/2020 10:10:10 AM

NOTE:
SEE C1.1 FOR PROJECT SCOPE AND WORK PLAN.



KEY NOTES:

- 1 APPROXIMATE LIMITS OF CONCRETE SLAB SUPPORTED ON FILL (INSIDE THICK DASHED LINE).
- 2 THIS ROOM WAS INACCESSIBLE DURING THE DEVELOPMENT OF THIS PLAN.

LEGEND:

	WOOD DECK		EXTENTS OF STRUCTURE
	WOOD DECK WITH CONCRETE OVERLAY		EXTENTS OF WOOD DECK
	CONCRETE SLAB ON FILL SOIL		

EXISTING CONDITION: FLOOR PLAN
 OLD MEREDITH PIER DEMOLITION
 FACILITIES DEVELOPMENT & MANAGEMENT DIVISION
 COUNTY OF SONOMA - DEPARTMENT OF GENERAL SERVICES
 915 HIGHWAY 1, BODEGA BAY, CALIFORNIA 94923

Submittal / Revision:

Job No: 20-0928
 Drawn By: BWW
 Checked By: MC
 Date: June 5, 2020

Sheet Number
C2.0
 2 of 6

DATE PLOTTED: 6/10/2020 10:58:52 AM
 PLOTTER: HP DesignJet T1100ps
 PLOT SCALE: 1" = 10'
 PLOT SHEET: C2.0

Caution Signs and Traffic Controls



Parking and Traffic Plan



BUSINESS OPERATIONS

CONSTRUCTION FENCE

TRUCK EXIT LANE/PATH

- PARKING NOTES:**
1. APPROX. 18 SPACES FOR BUSINESS USE
 2. BUSINESS HOURS 10:00AM - 6:00PM
 3. CONTRACTOR PARKING BEHIND FENCE LINE AND POSSIBLY AT TIDES RESTAURANT.

EXCLUSION/BUFFER ZONE

DEMOLITION ZONE

BUSINESS OPERATIONS



Protective Measures and Containment – Land Side

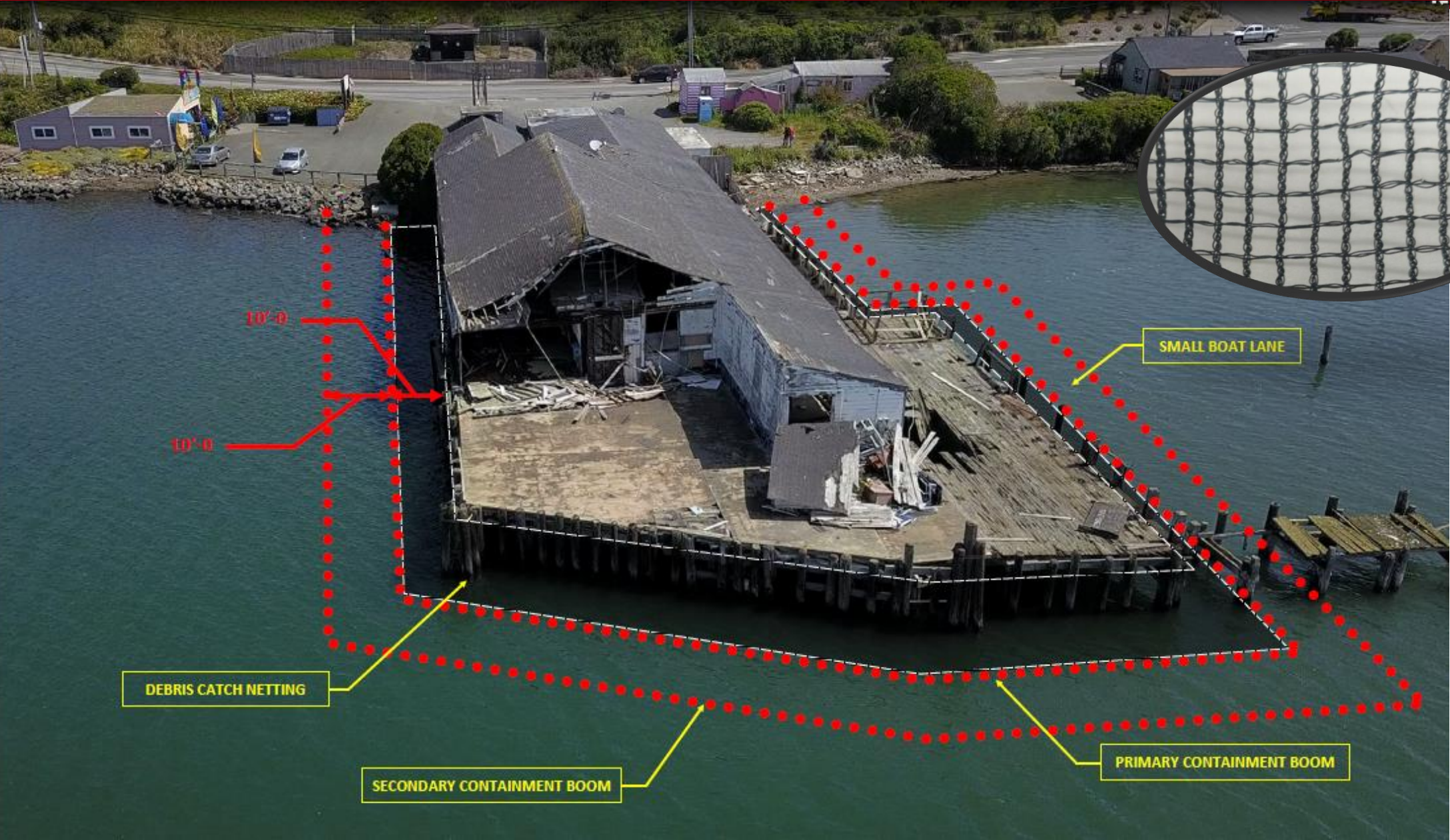


A specialist consultant will be onsite operating the monitors, securing accurate samples, etc.

⊗ - APPROXIMATE LOCATION OF AIR MONITORS

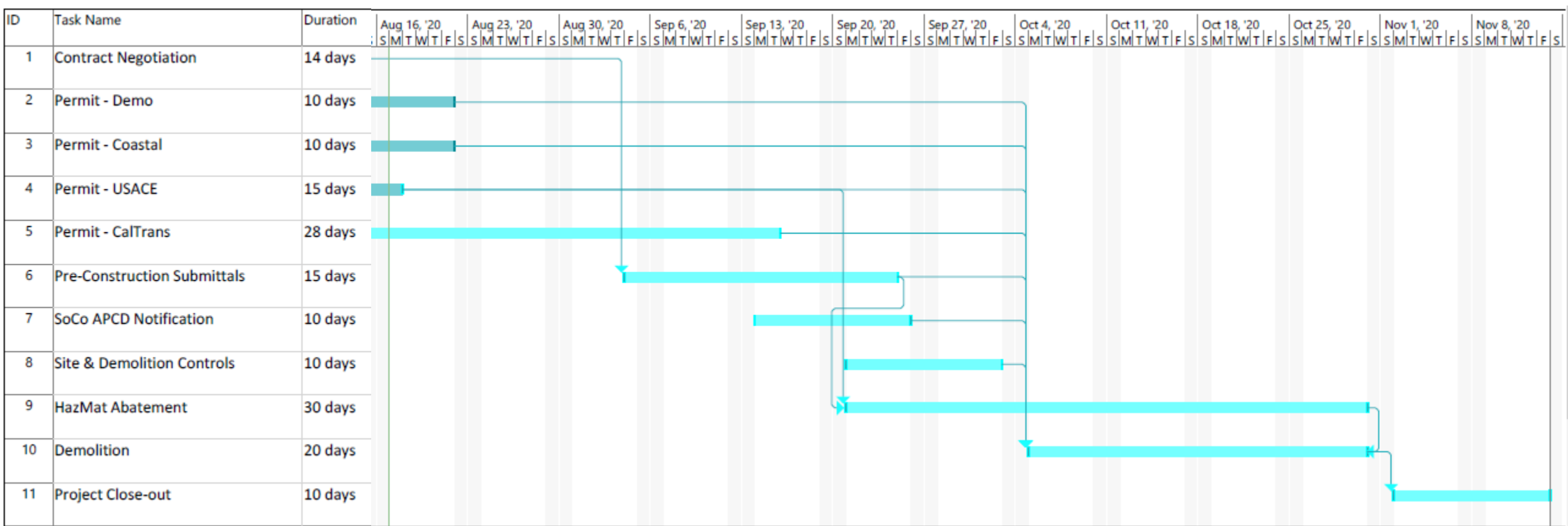
↙ - APPROXIMATE AFTERNOON WIND DIRECTION

Protective Measures and Containment – Water Side



Debris netting close-up view

Demolition Timeline



TALK AROUND TOWN...

“Our season is so short, especially with COVID – obstructing our business will kill us”

What about the environment? What about traffic?

What a cool building! How old is it? What happened to it?

What an eyesore! How old is it? What happened to it?

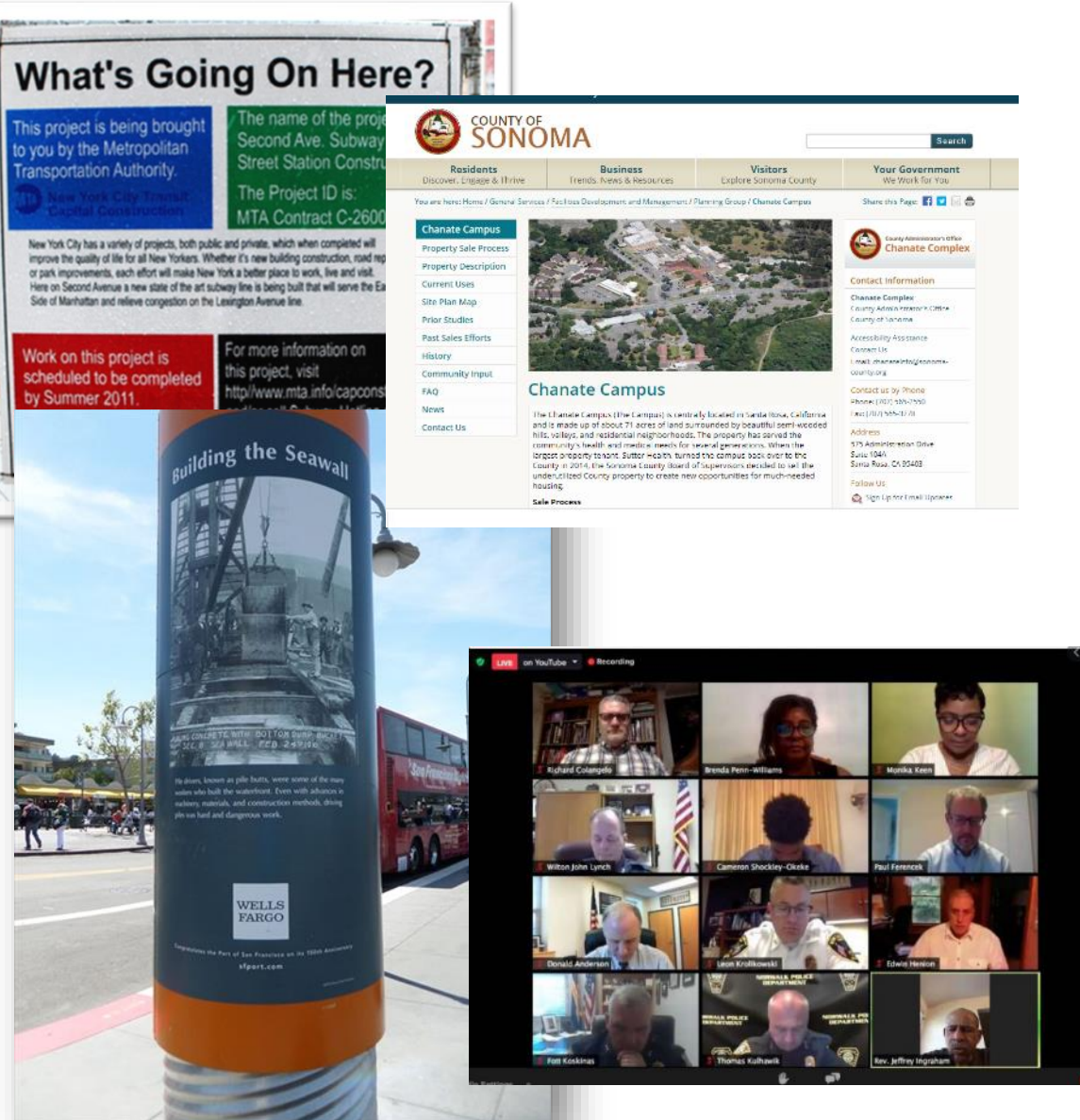
Why is this happening now? What is going to go there?



Communication Strategy

STAKEHOLDERS	KEY MESSAGE	APPROACH
Business Owners/neighbors	<ul style="list-style-type: none"> - We want to partner with you for us all to be successful - We will continue relations with you throughout the process - This is an opportunity for public interest/information despite temporary inconvenience 	<ul style="list-style-type: none"> - Involve them early and often - Town halls/early meetings to clarify their key concerns and mitigations for them - Partner with them on engagement, education safety, involvement - Invite early/key stakeholder involvement in site's future.
Community Members (who wanted the pier to come down)	<ul style="list-style-type: none"> - What you asked for is happening! - The process is an engineering feat that ensures safety and stewardship of the community, and the environment. - Imagine what could replace it! What is the future of this unique and beautiful area? 	<ul style="list-style-type: none"> - Ensure awareness of town halls, webpage, email updates, and art project. - Invite involvement in future planning
Tourists/Visitors/Members of the public	<ul style="list-style-type: none"> - This Pier and the area has a fascinating history and story to tell - This project is an engineering feat that ensures safety, stewardship of the community, and the environment. - Imagine what could replace it! What is the future of this unique and beautiful area? 	<ul style="list-style-type: none"> - Ensure awareness of town halls, webpage, email updates, and art project.
Historical society, local civic leadership, gov't. partners (Parks Dept., Coast Guard?)	<ul style="list-style-type: none"> - Lend us your expertise and knowledge of the area to help share the history and fascinating facts about the pier. - This is an opportunity for public interest and community engagement regarding the area's future. 	<ul style="list-style-type: none"> - Ensure awareness of town halls, webpage, email updates, and art project. - Invite involvement in future planning

Community Outreach – Many Points of Contact



- Virtual town hall(s), regular updates, focused on nearby businesses, neighbors, community
- Webpage (a la Chanate) – project history and details, Q&A, timeline, maps, latest news, etc.
- Large signage placed strategically explain, in brief, what's going on and how to find out more
- Flyer/one-pager/brochure to distribute via visitor's center, nearby businesses, etc.
- Partnership with Supervisor's office, business owners, historical society, chamber of commerce, visitor's center.